

Lincoln Greening

Roxby Community Garden Info pack



Supported using public funding by
**ARTS COUNCIL
ENGLAND**



A space of sanctuary

Roxby Community Garden is an amazing new Garden of Sanctuary and public events space in the heart of Lincoln Green, perfect for installations, public engagement and low tech presentations.

Mafwa Theatre are working alongside local residents to transform the site into a garden for all.

On completion in Spring 2023, the garden will be available for community groups and residents to use for their own events and activities. A flexible performance space within the garden will provide an accessible setting for community performances and creative engagement.

We want to work with community and cultural friends to develop a broad, socially responsive, and far-reaching programme of performances and community events within the space.



About Mafwa

Mafwa Theatre is a community theatre company bringing refugees, asylum seekers and settled communities together in Lincoln Green since 2018. We use drama and the arts to create work that celebrates our similarities and differences, brings people together and speaks truth to power.



Audience Engagement

Mafwa Theatre have been working with a wide range of communities and local residents have been involved in this project since its inception:

- **3 'Sow and Speaks'**
 - **2 Community Gala events**
 - **20 weekly gardening groups**
 - **Regular steering group meetings**
 - **255 unique attendances to celebrations**
 - **60 volunteers**
 - **200+ volunteer hours**
-

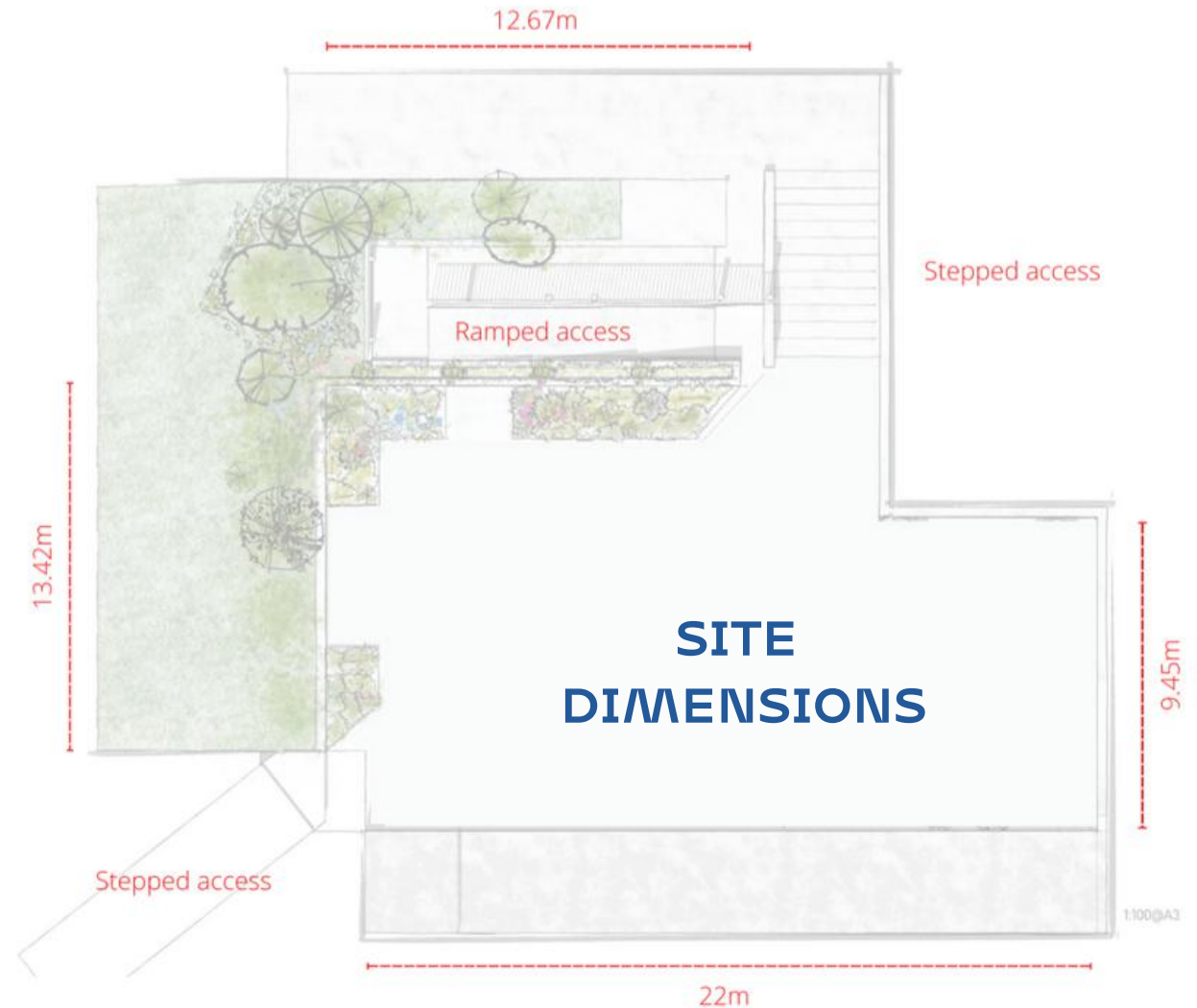
Site Specifications

The space has been designed to be multi-functional with a variety of seating, eating, resting and performance areas to accommodate a range of activities and events within the site.

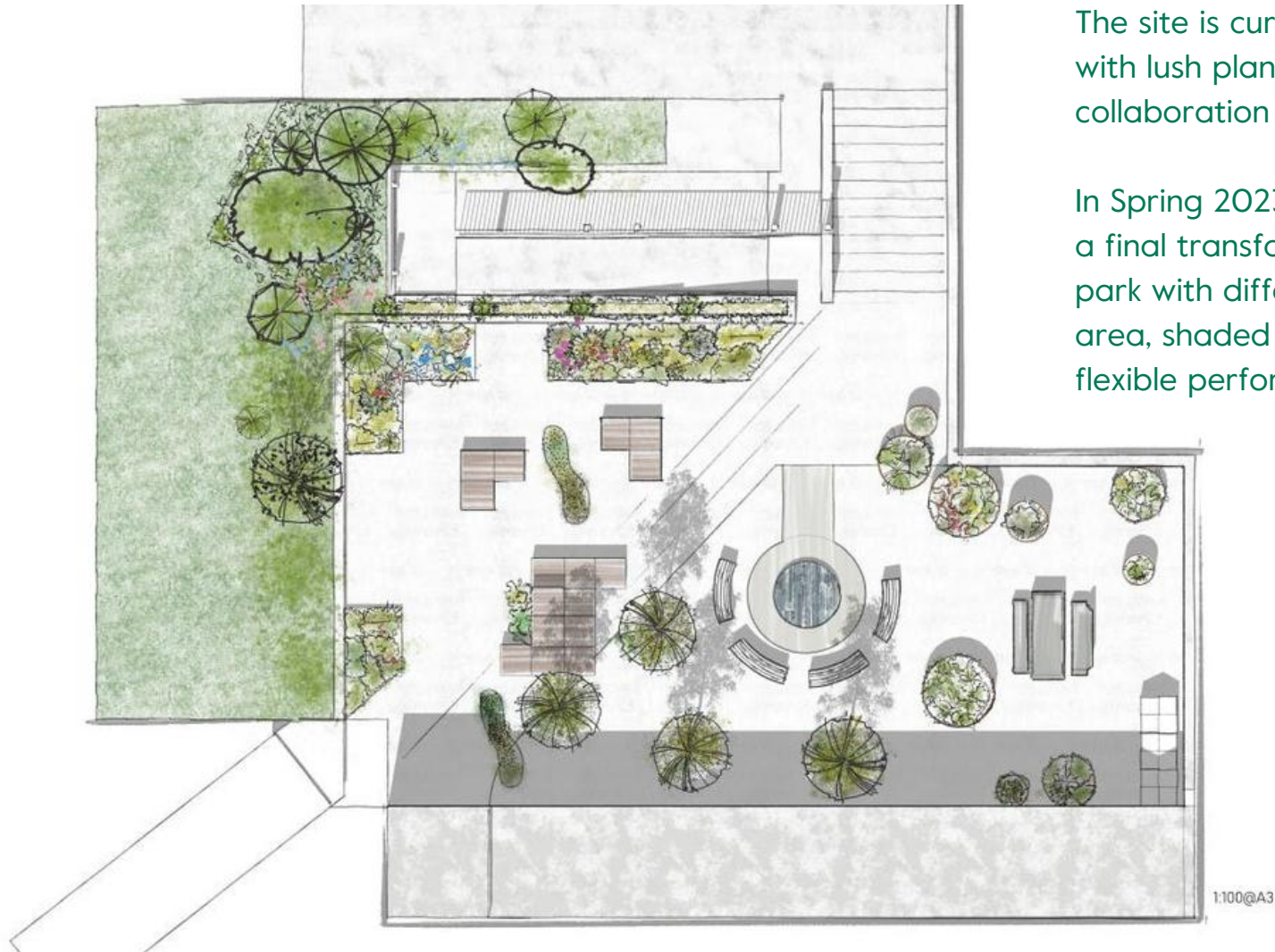
The site is centrally located and visible from 6 tower blocks within the Lincoln Green estate, making it a vibrant and exciting corner of the estate, used by many residents.

There is no running water or electricity on site, if your event requires electricity, we can advise you on generator hire.

As an open-air site there is no rain cover. For poor weather conditions, we would advise gazebo hire.



Design Plans



The site is currently a blank canvas with lush planting designed in collaboration with the Plant Room.

In Spring 2023, the site will undergo a final transformation into a pocket park with different zones: a growing area, shaded seating area and two flexible performance spaces.



How to find us

Roxby Community Garden is located just off Lindsey Road, nearest postcode is LS9 7PF. Coordinates are 53°48'12.9"N 1°31'27.3"W

Parking

Parking in Lincoln Green is limited to residents only.

There is very limited street parking available.

The nearest car parks are:

Beckett Street Car Park (6 minute walk)

<https://goo.gl/maps/CYYVvoJrUqgUT3Nh7>

Trafalgar Street Car Park (16 minute walk)

<https://goo.gl/maps/7WvtligDdWX59AUy9>

Victoria Leeds Car Park (15 minute walk)

<https://g.page/VictoriaLeedsCarPark?share>

On foot

Lincoln Green Community Garden is around a 30-minute walk from Leeds Train Station or a 20-minute walk from Leeds Bus station.

Bus routes from Leeds City Centre:

First Leeds Number 50A, 11mins

First Leeds Number 49, 15 mins

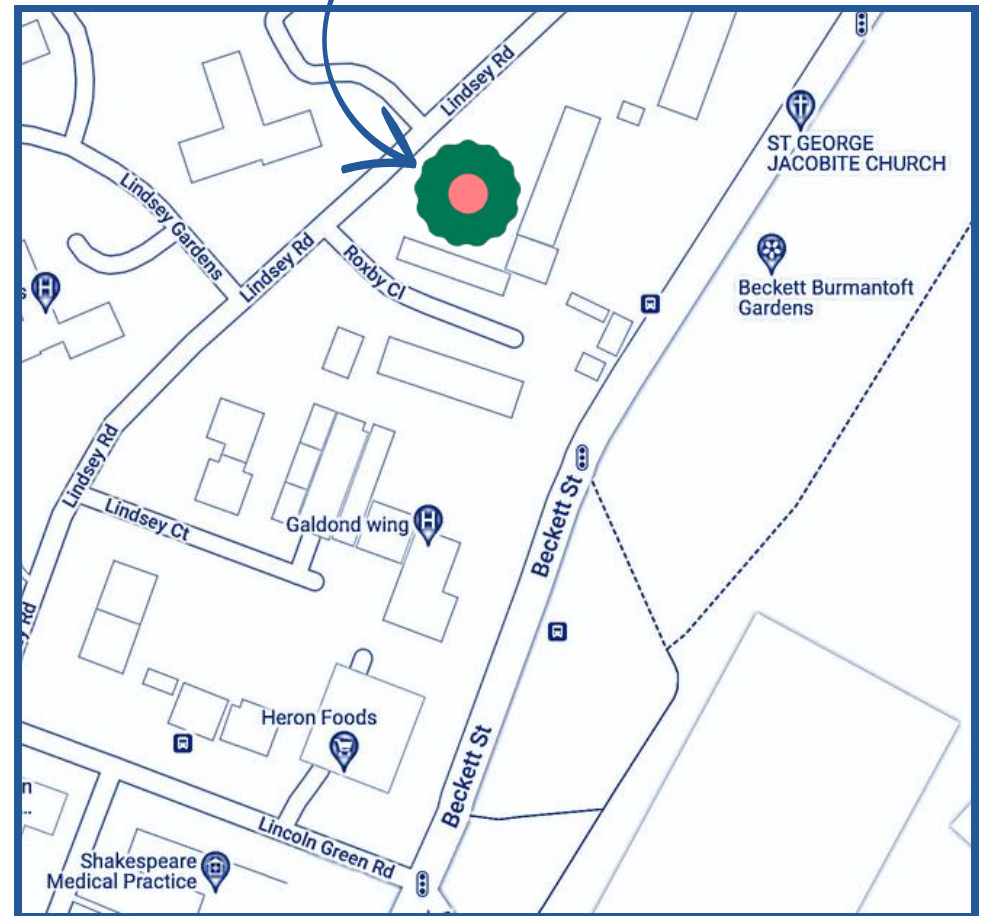
First Leeds Number 42, 15mins

Nearest stop:

Beckett Street near Lincoln Green Road, Burmantofts

Visit Leeds City journey mapper to plan your journey:

<https://www.firstbus.co.uk/leeds/plan-journey/journey-planner/>



Access Info

Roxby Community Garden is accessible via stepped or ramp access.

Approaching Roxby Community Garden from the South along Lindsay Rd there is a concrete pathway leading to the site (with garages on the right) with 1 step up and 5 further steps down into the site.

Alternatively, continue further along Lindsay Rd via the pedestrian pathway (past the bin store) when you will reach a level pathway on your right. Take this past the bin store for 10 meters until you reach the stepped or ramped access into the site.





Contact for booking

If you would like to host an event, workshop, community gala, art exhibition or performance at Roxby Close Community Garden, we'd love to hear from you.

mafwatheatre@gmail.com

www.mafwatheatre.co.uk



@mafwatheatre

